

DWM

Ground-Check Device

Overview

The Ground-Check device can be used as a monitor device detecting the grounding continuity when the ship docks at shore and is powered through shore power. The device conforms to the 2014/35/EU Low Voltage Directive and the 2014/30/EU Electromagnetic Compatibility Directive.

Product features

- Supports input of multiple specifications of power supplies;
- Flexible adjustment method for alarm resistance threshold;
- Intuitive grounding monitoring and equipment operation status display;
- Passive contact output for fault and operational status.

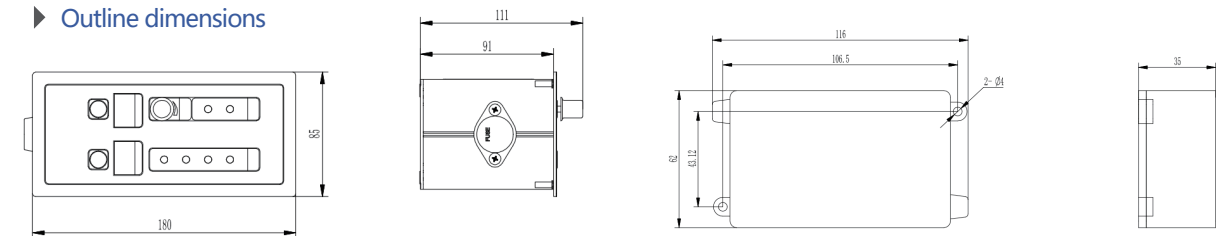
Product composition

The device is consisted of a monitor and a terminal. The monitor is installed on the side of ship normally in the Medium Voltage Shore Connection device. And the terminal is installed on the side of shore normally in the dock transformer cabinet or distribution cabinet. Each monitor needs to be paired with a terminal for use.

Technical index

- Input voltage:25VA, 120-240Vac, 50Hz;
15W, 110-250Vdc;
15W, 24-48Vdc;
20VA, 48Vac, 50Hz;
- Output drive current: not less than 100 mA;
- Open-circuit output voltage: 23.5 Vdc±0.5 Vdc;
- Pull-in time: not more than 750 ms;
- Auxiliary contact:Operating status (changeover contact);
Fault status (changeover contact);
Trip status (changeover contact);
- Grounding resistance monitoring range: 0~100 Ω;
- Terminal characteristic: Zener;
- Terminal Zener voltage: 5.6 Vdc±0.1 Vdc;
- Operating temperature: -25 °C~+55 °C.

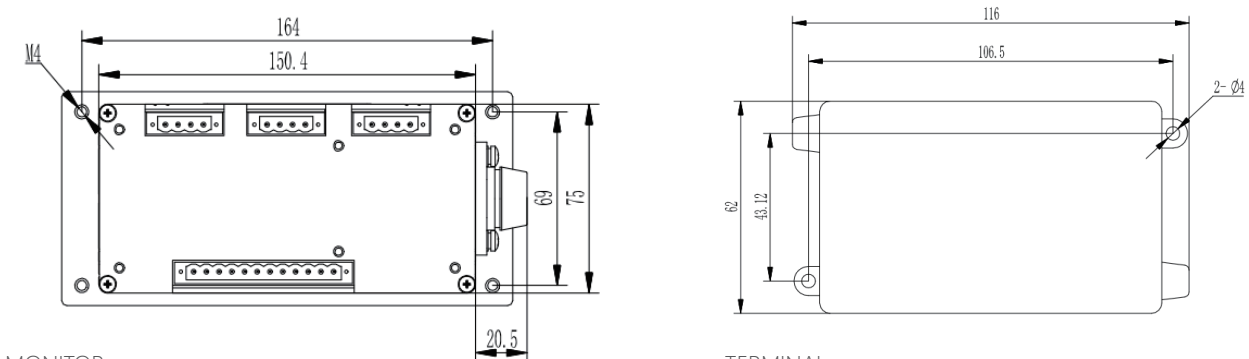
Outline dimensions



MONITOR

Outline dimensions: 85x180x91(mm, wide x height x depth)

Installation dimensions



MONITOR

Embedded in the panel, installation dimensions:
164x69 (mm), 4xM4 screw

TERMINAL

Baseplate installation, installation dimensions:
106.5x43.12 (mm), 2xØ4 Through-Hole.

Model naming

Monitor

Model	Device series	DWM	-1	-Master
Design code				
Monitor				

Terminal

Model	Device series	DWM	-1	-Terminal	-5.6V
Design code					
Terminal					
Zener voltage					