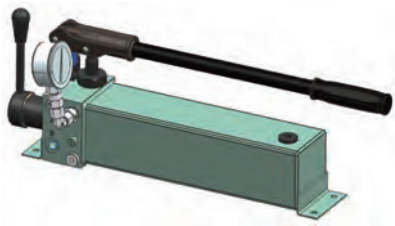


# GRHP Emergency hand pump



► Overview

GRHP emergency hand pump is used for hydraulic and electro-hydraulic actuator function test and emergency operation after sudden power loss of actuator under working conditions, so as to achieve therequired working state of valve.

► Product features

- High output pressure, large displacement and reliable operation ;
- Compact structure, light weight, simple operation, easy to carry.

► Technical index

- Installation form: portable, fixed(choice)
- Valve material: Stainless steel
- Operating temperature: -10°C ~ +65°C
- Hydraulic medium: mineral oil according to DIN 51524(other media on request)
- Working pressure: 50-200Bar
- Maximum pressure:250Bar

► Model naming

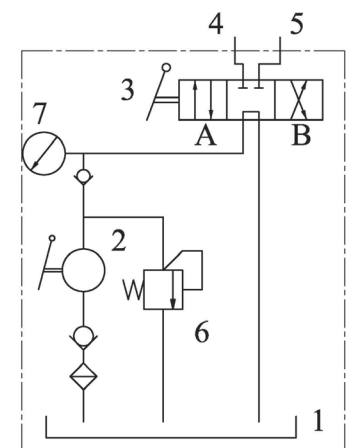
	GR	HP	<input type="checkbox"/>	<input type="checkbox"/>	<input type="checkbox"/>	/ <input type="checkbox"/>
Emergency hand pump						
Tank volume: 2 for 2L , 5 for 5L						
The volume of the first mouth: 1 is 8ml, 2 is 12ml, 3 is25ml						
Length of hydraulic pipe: 2 is 2m, 3 is 3m, 5 is 5m						
Installation mode: F is fixed, omitted: portable						

► Product composition

The emergency hand pump adopts the structural from of module design, which is mainly composed of the following components.

- Hand pump
  - Manual directional valve
  - Valve block
  - Pressure gauge
- Check valve
  - Relief valve
  - Tank
  - Hydraulic interface, hydraulic hose, etc

### ► Hydraulic principle



1-油箱; 2-手摇泵; 3-手动换向阀;  
4, 5-油口; 6-溢流阀; 7-压力表

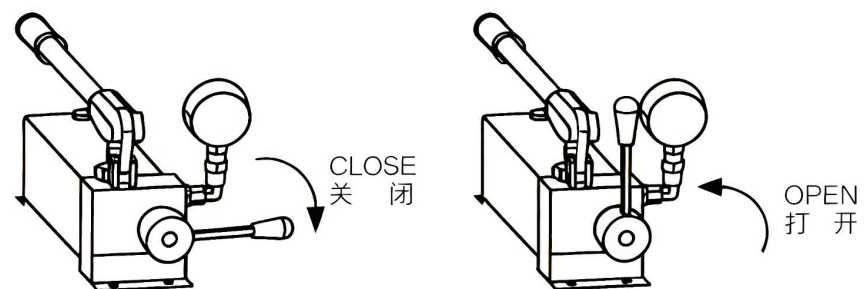
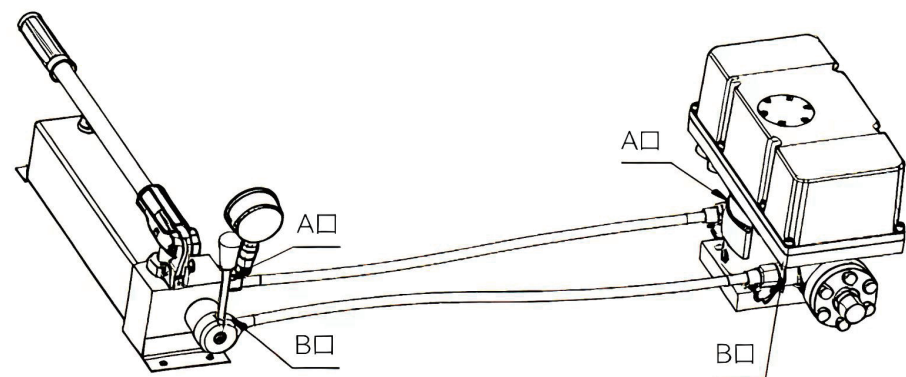
### ► operation using hand pump

Connect A and B hose to corresponding A and B port of actuator;

Switch HP handle to open or close position of valve;

Press the HP to observe whether the valve position indicator is opened or closed in place;

Dismantle the hose connected with actuator A and B after using the hand pump.



### ► Shape and interface

Emergency hand pump(customers can customize according to their own displacement to own displacement and hydraulic pipe length).

